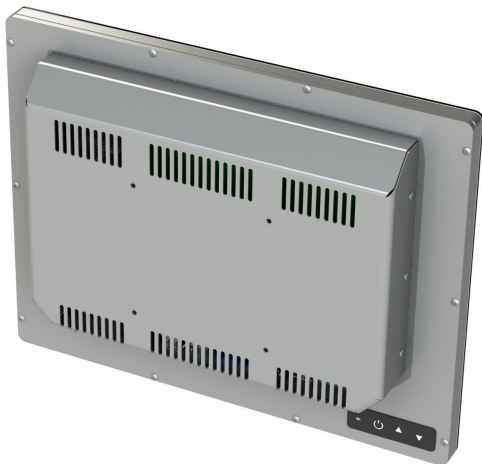
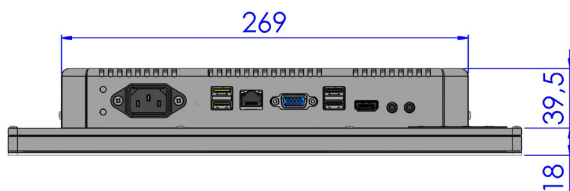
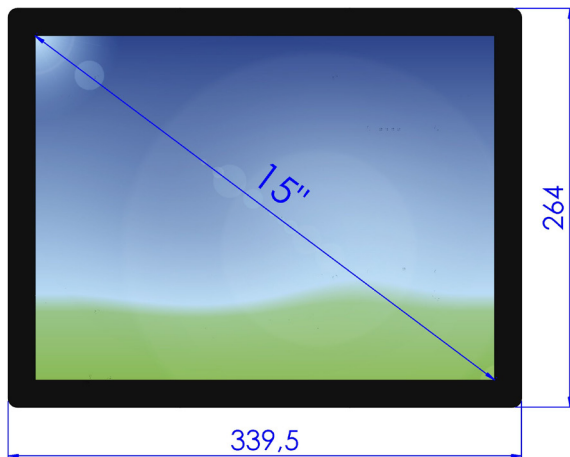


PPC15DMIT-0K Desktop Indoor PCAP



- Projected Capacitive Touchscreen
- Protection glass front panel



Specifications

LCD Panel

Display Type	15" TFT LCD
Resolution	1024 x 768
Colors	16.2M
Backlight	LED
Brightness	300cd/m ² (typ.)
Viewing Angle	176° H, 176° V (typ.)

PC System

Processor/ Memory	Intel® Celeron® J1900, 4x 2.0GHz up to 8GB RAM
<i>option</i>	Intel® Celeron® J4105, 4x 1.5GHz up to 8GB RAM
Storage	Solid State Disk, up to 1TB
I/O Port	1x LAN 2x USB 2.0 more/ other I/O-Ports on request

Mechanical

Construction	Protection glass front panel with passe-partout (RAL 9005, jet black) and PCAP touch screen, powder coated steel/ aluminium chassis
Color	RAL 9005, 7035, 7032, 9006, etc.
Dimension	339.5 x 264 x 57.5 mm
Mounting	VESA 100 x 100mm (4 x M4)
Protection glass	anti glare protection glass (passe-partout RAL9005, jet black)

Electrical

Power Supply	115/230V AC, 50/60Hz
<i>option</i>	12V, 24V DC

Environmental

Temperature	operating 0°C to 45°C storage -20°C to 60°C
Humidity	max. 90% RH, non condensing

Options

Operating System	Microsoft® Windows® 7 Pro ¹ Microsoft® Windows® 10 Pro Microsoft® Windows® Embedded Linux®
------------------	--

AC adapter
other options on request

Accessories (included)

Power-cord

¹ with Intel® Celeron® J1900 processor only

Intel®, Celeron®, Pentium®, Intel® Core™ and Intel® Atom™ are trademarks of the Intel Corporation in the U.S. and other countries. Microsoft® and Windows® are trademarks of the Microsoft® Corporation in the U.S. and other countries. Linux® is the registered trademark of Linus Torvalds in the U.S. and other countries.

